

# *Waters School*

## *New Student/Kindergarten*

### *Enrollment & Transfer Information*

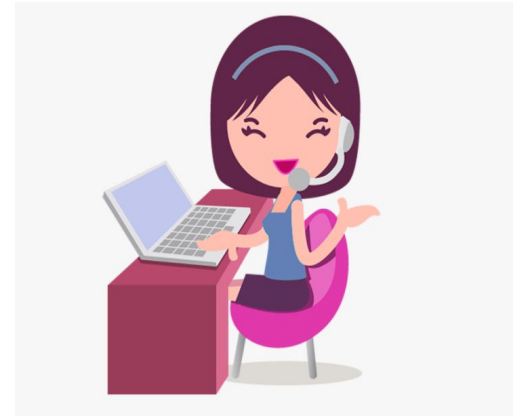


***Cecibel Amerson***  
ckbarzola@cps.edu

- Do you need help with
- understanding enrollment requirements?
  - beginning the enrollment process?
  - transferring your child to another school?
  - updating your contact information?

Contact Mrs. Mendez  
or Mrs. Amerson for assistance!

Waters Office Hours  
Monday-Friday 8:00am-3:45pm  
773-534-5090, ext "0"



***Melissa Mendez***  
mmendez54@cps.edu

# Enroll, Register, Transfer

Enrollment for NEW Waters Students (Not Currently Enrolled) for school year 2021-2022 Happening Now!

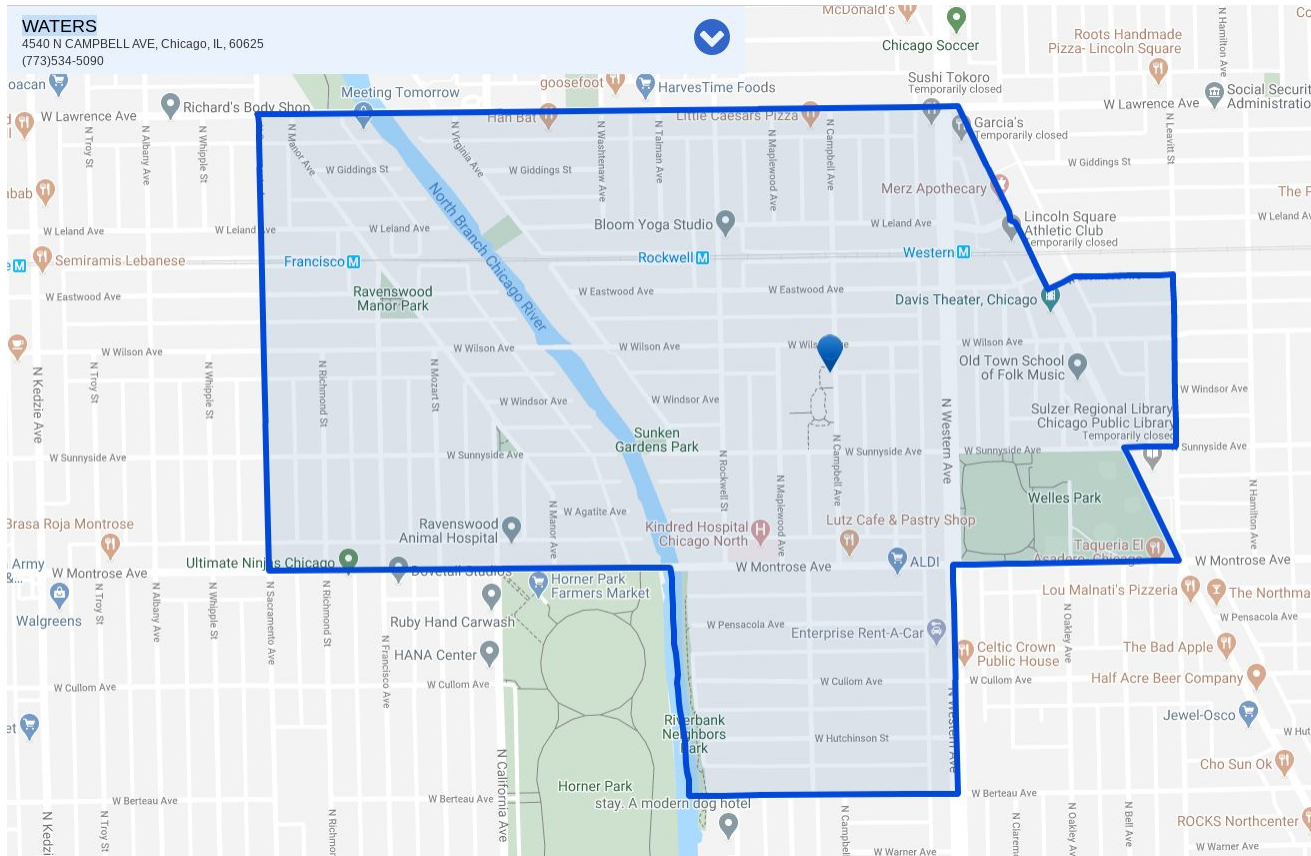
**By Appointment:** We are currently scheduling appointments for kindergarten and new student registrations. Transfer requests can be made over the phone or by email. For more information regarding CPS enrollment, please click on this link to refer to the [Enrollment Procedures and Requirements](#).

**FIRST:** Check to see if you live in Waters' boundaries. The school locator map is [here](#). (type in your address to see which elementary and high schools you live in the boundaries) or, see the next slide for a map of Waters School boundaries.

A SECOND ROUND lottery is available in June for families who missed the December deadline.

# Waters Enrollment Boundaries

[Click here](#) to check if you are within the Waters attendance boundaries)



# Enrollment Information

Waters Elementary is a Fine Arts Magnet Cluster Neighborhood School. We accept students who live within our neighborhood attendance boundary. Available seats for students who live outside of the boundary are filled through the computerized lottery application and selection process.

There are no assessment eligibility requirements for Waters School, only the age requirement. To enroll for kindergarten, your child must be five years old, on or before September 1st and first grade students must be six years old, on or before September 1st.

★ Please see next slide for all elementary school age requirements.

# Enrollment Age Guidelines

Student born on or before Sept 1st  
of:

Grade

Year of Graduation

2016	Kindergarten	2034
2015	1st Grade	2033
2014	2nd Grade	2032
2013	3rd Grade	2031
2012	4th Grade	2030
2011	5th Grade	2029
2010	6th Grade	2028
2009	7th Grade	2027
2008	8th Grade	2026

If you live within the neighborhood attendance boundary, you can now enroll your child via electronic enrollment.

Documents you will need:

- Child's original birth certificate
- Parent's Illinois drivers license or Illinois State ID with a current address.
- **Two** current proof of address (i.e. current utility bills, bank or credit card statement, etc.) One must be a bill.
- **If applicable:** Transfer form from previous CPS School / ISBE form from previous out of district school
- Medical, dental, or vision exam forms if they are complete (if not, they will be provided and can be turned in later).
- Parents' contact information and emergency contact information for an additional trusted adult (21 years old or older)
- Once the official required documentation has been received and verified (birth certificate, Illinois ID with current address, and proof of address) then the enrollment will be officially complete and registered into the CPS ASPEN system.

If you do not live in the neighborhood, you may apply for admission through the CPS lottery, beginning each fall prior to the school year for which you are applying.

- Step 1: Go to the online portal, [go.cps.edu](https://go.cps.edu), and click “Apply Online” under Step 1. This will allow you to open your account, create your password, and request your Personal Identification Number (PIN), which will be mailed to your home.
- Step 2: After you receive your PIN, and access the online portal, click the APPLY button for the magnet, magnet cluster and open enrollment schools to select the schools to which your child is applying. You can apply to up to 20 open enrollment, magnet, and/or magnet cluster schools, in any combination.
- Step 3: After you successfully submit your application, the online portal will show the word “Completed” under the status for applying. You will also receive an email confirmation. If the online portal shows “Not Completed,” you have not successfully submitted your application.

## Health Requirement for Incoming Grades Kindergarten, 6th and 9th

Students entering kindergarten, sixth, and ninth grade for the first time are all required to have a NEW CERTIFICATE OF HEALTH FORM on file at their local school in addition to up to date IMMUNIZATIONS.

Below are the current Immunization and Health Exam requirement for all targeted grade levels

<u>Kindergarten</u>	<u>Sixth Grade</u>	<u>Ninth Grade</u>
<ul style="list-style-type: none"><li>• 4 doses of Dtap vaccine</li><li>• 3 doses of Polio (IPV) vaccine</li><li>• 3 doses of Hepatitis vaccine</li><li>• 2 doses of Varicella (Chicken Pox) vaccine</li><li>• 2 doses of MMR(measles, mumps, rubella) vaccine</li><li>• New Certificate of Health Exam</li></ul>	<ul style="list-style-type: none"><li>• 4 doses of Dtap vaccine</li><li>• 3 doses of Polio (IPV) vaccine</li><li>• 1 dose of Tdap vaccine</li><li>• 1 dose Meningococcal vaccine</li><li>• 2 doses of MMR (measles, mumps, rubella) vaccine</li><li>• 2 doses of Varicella (Chicken Pox) vaccine</li><li>• 3 doses of Hepatitis vaccine</li><li>• New Certificate of Health Exam</li></ul>	<ul style="list-style-type: none"><li>• 4 doses of Dtap vaccine</li><li>• 3 doses of Polio (IPV) vaccine</li><li>• 1 dose of Tdap vaccine</li><li>• 1 dose Meningococcal vaccine</li><li>• 2 doses of MMR(measles, mumps, rubella) vaccine</li><li>• 2 doses of Varicella (Chicken Pox) vaccine</li><li>• 3 doses of Hepatitis vaccine</li><li>• New Certificate of Health Exam</li></ul>



# Health Insurance Needs?

All kids health insurance provides coverage for children in the State of Illinois. Please contact the **CPS Children and Family Benefits at 773-553-KIDS** for assistance.

If you do not have a medical provider, are uninsured, or have limited or no income and believe you need non-emergency medical services, you can contact your nearest community health center (CHC) by phone and inform them of your need. They will work with you to coordinate appropriate care. In cases of emergency, please call 911.

There are approximately 165 CHCs throughout the city of Chicago, so find one that is close to you. **You can find your nearest Community Health Center at:**

[www.findahealthcenter.hrsa.gov](http://www.findahealthcenter.hrsa.gov). It is recommended that the Certificate of Health form and required immunizations be completed by the student's health care provider and returned to school main office at the start of school year 2021-2022.

**PLEASE KEEP A COPY OF YOUR CHILD'S IMMUNIZATIONS FOR YOUR RECORDS.**