

JANUARY 2019 ELEMENTARY SCHOOL COLD BREAKFAST

WWW.CPS.EDU/MENU

ALL STUDENTS EAT FREE!

MONDAY	TUESDAY	WEDNESDAY	THURSDAY	FRIDAY
<p>7</p> <p>APPLE CINNAMON MUFFIN & STRING CHEESE</p> <p>CHEERIOS & GRAHAM CRACKERS</p> <p>DRIED CRANBERRIES FRESH APPLE</p>	<p>8</p> <p>PB & JELLY GRAHAM CRACKER BAR</p> <p>NEW! CINNAMON VANILLA GRANOLA & STRING CHEESE</p> <p>FRESH APPLE FRESH ORANGE</p>	<p>9</p> <p>STRAWBERRY KIWI BAR</p> <p>CHEERIOS & STRING CHEESE</p> <p>DRIED CRANBERRIES FRESH APPLE</p>	<p>10</p> <p>NEW! APPLE CINNAMON BAR</p> <p>NEW! CINNAMON VANILLA GRANOLA & STRING CHEESE</p> <p>FRESH APPLE FRESH ORANGE</p>	<p>11</p> <p>MINI STRAWBERRY CREAM CHEESE BAGELS</p> <p>FROSTED MINI WHEATS & STRING CHEESE</p> <p>BLENDED FRUIT JUICE FRESH APPLE</p>
<p>14</p> <p>BLUEBERRY MUFFIN & STRING CHEESE</p> <p>FROSTED MINI WHEATS & GRAHAM CRACKERS</p> <p>DRIED CRANBERRIES FRESH APPLE</p>	<p>15</p> <p>MINI CINNAMON CREAM CHEESE BAGELS</p> <p>NEW! CINNAMON GOLDEN CRISP CEREAL & STRING CHEESE</p> <p>FRESH ORANGE FRESH BANANA</p>	<p>16</p> <p>MANGO BANANA BAR</p> <p>NEW! STRAWBERRY PARFAIT & GRAHAM CRACKERS</p> <p>STRAWBERRIES FRESH PEAR</p>	<p>17</p> <p>STRAWBERRY KIWI BAR</p> <p>NEW! CINNAMON VANILLA GRANOLA & STRING CHEESE</p> <p>DRIED CRANBERRIES FRESH ORANGE</p>	<p>18</p> <p>PB & JELLY GRAHAM CRACKER BAR</p> <p>FROSTED MINI WHEATS & STRING CHEESE</p> <p>APPLE JUICE FRESH BANANA</p>

Good Morning! Let's Grab Breakfast.

Breakfast is available for every student, even after the final morning bell rings.

We proudly serve chicken raised with No Antibiotics Ever!

SunButter will be substituted in buildings with peanut-free menus.

All Meals Are FREE Every Day!

We offer a rotation of vitamin and mineral-rich seasonal fresh & cupped fruits.

Vegetarian entrees are offered daily.

We only use heart-healthy whole grain breads.

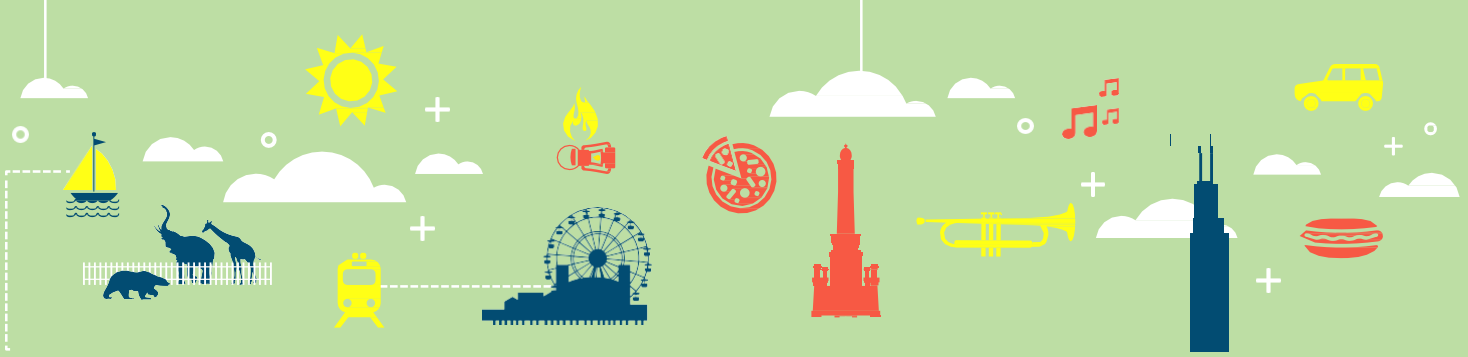
Our milk varieties include 1% low fat and fat-free flavored and unflavored options.

This institution is an equal opportunity provider.

Our menus are pork-free!
All menus are subject to change.
Not all offerings may be available in all buildings.



Questions? Contact us at food@cps.edu



JANUARY 2019 ELEMENTARY SCHOOL COLD BREAKFAST

WWW.CPS.EDU/MENU

ALL STUDENTS EAT FREE!

MONDAY	TUESDAY	WEDNESDAY	THURSDAY	FRIDAY
<p>21</p> <p>MARTIN LUTHER KING, JR. DAY</p>	<p>22</p> <p>APPLE CINNAMON MUFFIN & STRING CHEESE</p> <p>NEW! CINNAMON GOLDEN CRISP CEREAL & STRING CHEESE</p> <p>DRIED CRANBERRIES FRESH APPLE</p>	<p>23</p> <p>STRAWBERRY KIWI BAR</p> <p>FROSTED MINI WHEATS & STRING CHEESE</p> <p>FRESH APPLE SLICES FRESH PEAR</p>	<p>24</p> <p>NEW! APPLE CINNAMON BAR</p> <p>NEW! CINNAMON VANILLA GRANOLA & STRING CHEESE</p> <p>DRIED CRANBERRIES FRESH ORANGE</p>	<p>25</p> <p>MINI STRAWBERRY CREAMY CHEESE BAGELS</p> <p>CHEERIOS & STRING CHEESE</p> <p>BLENDED FRUIT JUICE FRESH BANANA</p>
<p>28</p> <p>BLUEBERRY MUFFIN & STRING CHEESE</p> <p>FROSTED MINI WHEATS & GRAHAM CRACKERS</p> <p>DRIED CRANBERRIES FRESH APPLE</p>	<p>29</p> <p>MINI CINNAMON CREAM CHEESE BAGELS</p> <p>NEW! CINNAMON GOLDEN CRISP CEREAL & STRING CHEESE</p> <p>FRESH ORANGE FRESH BANANA</p>	<p>30</p> <p>STRAWBERRY KIWI BAR</p> <p>FROSTED MINI WHEATS & STRING CHEESE</p> <p>FRESH APPLE SLICES FRESH PEAR</p>	<p>31</p> <p>MANGO BANANA BAR</p> <p>NEW! CINNAMON VANILLA GRANOLA & STRING CHEESE</p> <p>APPLE JUICE FRESH ORANGE</p>	<p>1</p> <p>NO CLASSES SCHOOL IMPROVEMENT DAY</p>

Good Morning! Let's Grab Breakfast.

Breakfast is available for every student, even after the final morning bell rings.

We proudly serve chicken raised with No Antibiotics Ever!

SunButter will be substituted in buildings with peanut-free menus.

All Meals Are **FREE** Every Day!

We offer a rotation of vitamin and mineral-rich seasonal fresh & cupped fruits.

Vegetarian entrees are offered daily.

We only use heart-healthy whole grain breads.

Our milk varieties include 1% low fat and fat-free flavored and unflavored options.

This institution is an equal opportunity provider.

Our menus are pork-free!
All menus are subject to change.
Not all offerings may be available in all buildings.



Questions? Contact us at food@cps.edu